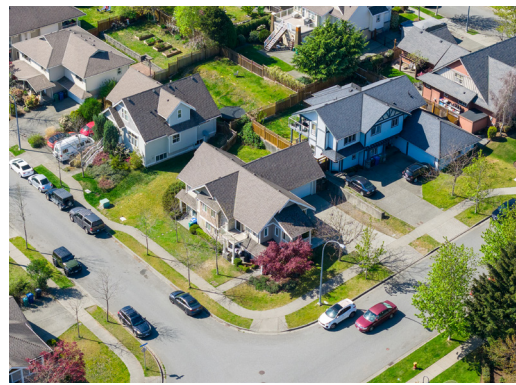
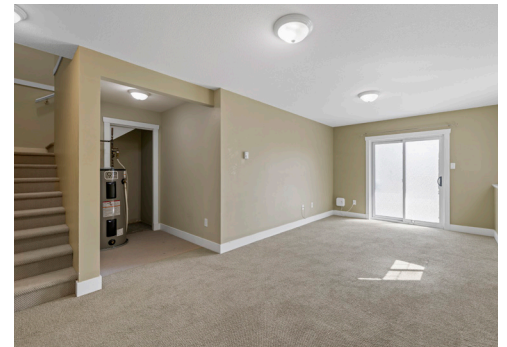




**MILLER REAL ESTATE TEAM**  
921 Sarum Rise Way





Welcome to this well-appointed home in desirable Hawthorne Estates, set on a corner lot in a beautifully landscaped neighbourhood with tree-lined boulevards and a large park just down the street. The location is ideal, close to Buttermilk Marsh, VIU, schools, and shopping. The main level features an open concept living space with vaulted ceilings, creating a bright and airy feel. Three bedrooms are located on this level, including a spacious primary with walk-in closet and four-piece ensuite, plus a full main bathroom and convenient laundry. A rec room on the lower level offers additional space for the main home. The remainder of the lower level includes a two-bedroom legal suite with its own laundry and private side entrance, made possible by the corner lot.



## Specifications



City: Nanaimo

Zoning: R5

Home Size: 2,292 SqFt

Lot Size: 6,530 SqFt

Taxes: \$6,301 (2025)

Construction: Frame

Exterior Finish: Vinyl

Roof: Fibreglass Shingle

Bedrooms: 5

Bathrooms: 2

Heat: Electric Baseboard & Wall Units

Schools: Fairview Elementary & NDSS

# Hawthorne Estates

All data & measurements are approximate & should be verified if important.



Thank you for viewing 921 Sarum Rise Way  
Additional Information Available at [MillerRealEstate.com](http://MillerRealEstate.com)



Additional Professional Photographs

Available to View on the Miller Real Estate Team Website

3D Immersive Tour & Interactive Floor Plan

Custom Video with Exterior & Interior Highlights

**Andrew Miller**  
Personal Real Estate Corporation  
**Jim Miller**  
Personal Real Estate Corporation



250.751.1223 • [MillerRealEstate.com](http://MillerRealEstate.com) • 1-5140 Metral Dr