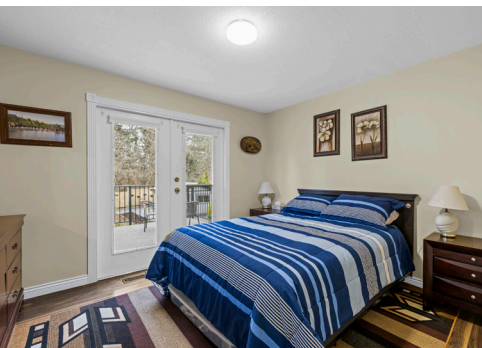




MILLER REAL ESTATE TEAM
2444 Conlin Way





Backing onto Diver Lake Park on a quiet side street, this meticulously maintained home sits on a third of an acre and offers lake views. The main level features three bedrooms, a four piece bathroom, and a bright kitchen with abundant cabinetry and three stainless appliances. The expansive back deck with hot tub is the perfect place to relax while enjoying views of Diver Lake. The fully fenced yard features beautiful landscaping, a large garden area, fruit trees, and berry plants. A spacious one bedroom unauthorized suite on the lower level offers flexibility. Abundant parking includes space for an RV. The property also features a wired 288 sqft workshop plus a separate tool/wood shed. Development potential may allow for a carriage house. Numerous updates include a heat pump, gas fireplace, and a seven year old roof. Conveniently located near shopping, schools, and all amenities.



Specifications



City: Nanaimo

Zoning: R5

Home Size: 2,142 SqFt

Lot Size: 14,310 SqFt

Taxes: \$4,906 (2025)

Construction: Frame

Exterior Finish: Wood & Vinyl

Roof: Fibreglass Shingle

Bedrooms: 4

Bathrooms: 2

Heat: Heat Pump & Natural Gas
Forced Air

Schools: syuwén'ct Elementary &
Wellington Secondary

Diver Lake

All data & measurements are approximate
& should be verified if important.



Thank you for viewing 2444 Conlin Way
Additional Information Available at MillerRealEstate.com

Additional Professional
Photographs

Available to
View on the
Miller Real
Estate Team
Website

3D Immersive
Tour & Interactive Floor Plan

Custom Video with Exterior
& Interior Highlights

Andrew Miller

Personal Real Estate Corporation

Jim Miller

Personal Real Estate Corporation



MILLER REAL ESTATE TEAM

REMAX
PROFESSIONALS

EACH OFFICE INDEPENDENTLY OWNED AND OPERATED

250.751.1223

• MillerRealEstate.com

• 1-5140 Metral Dr