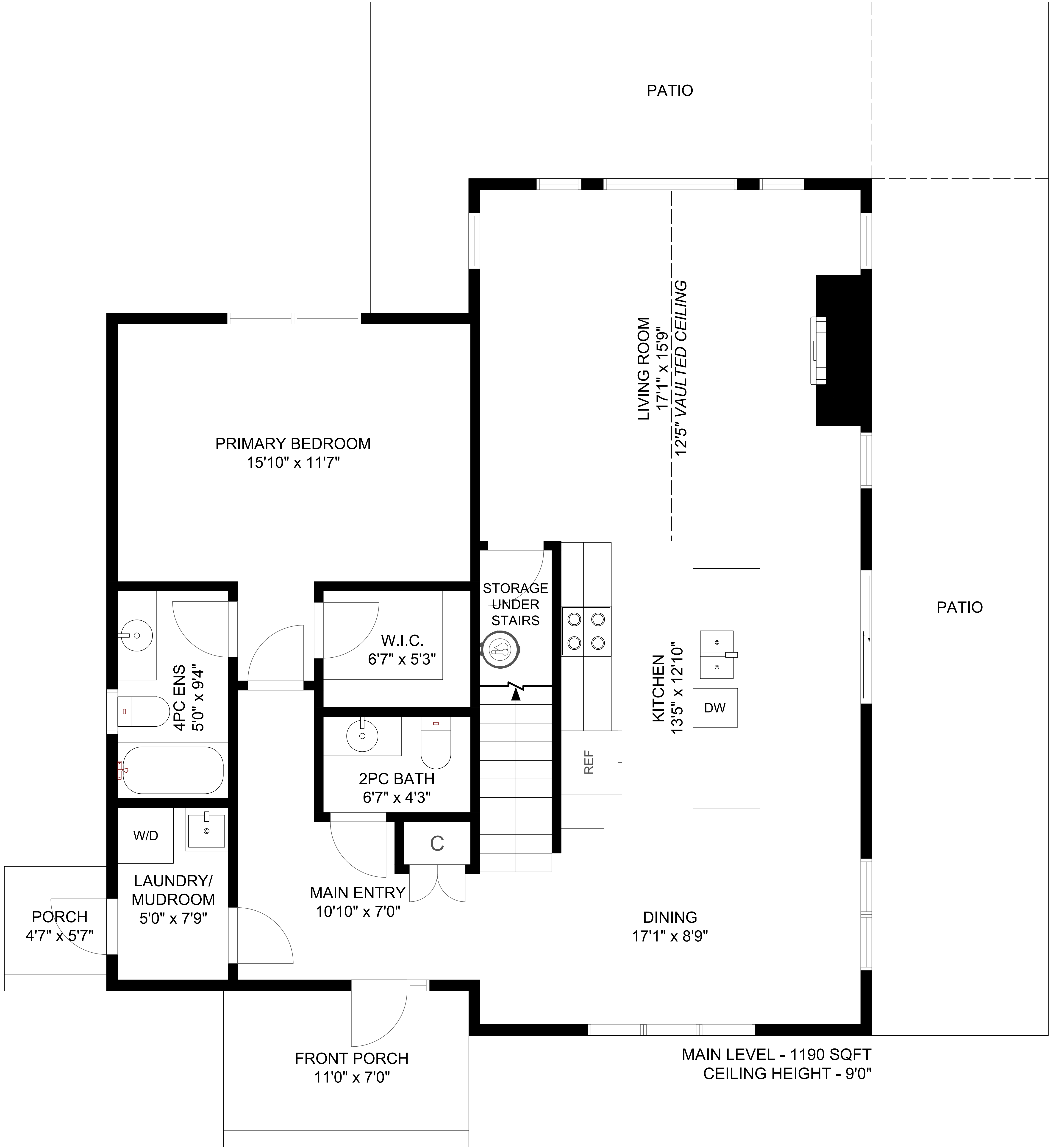
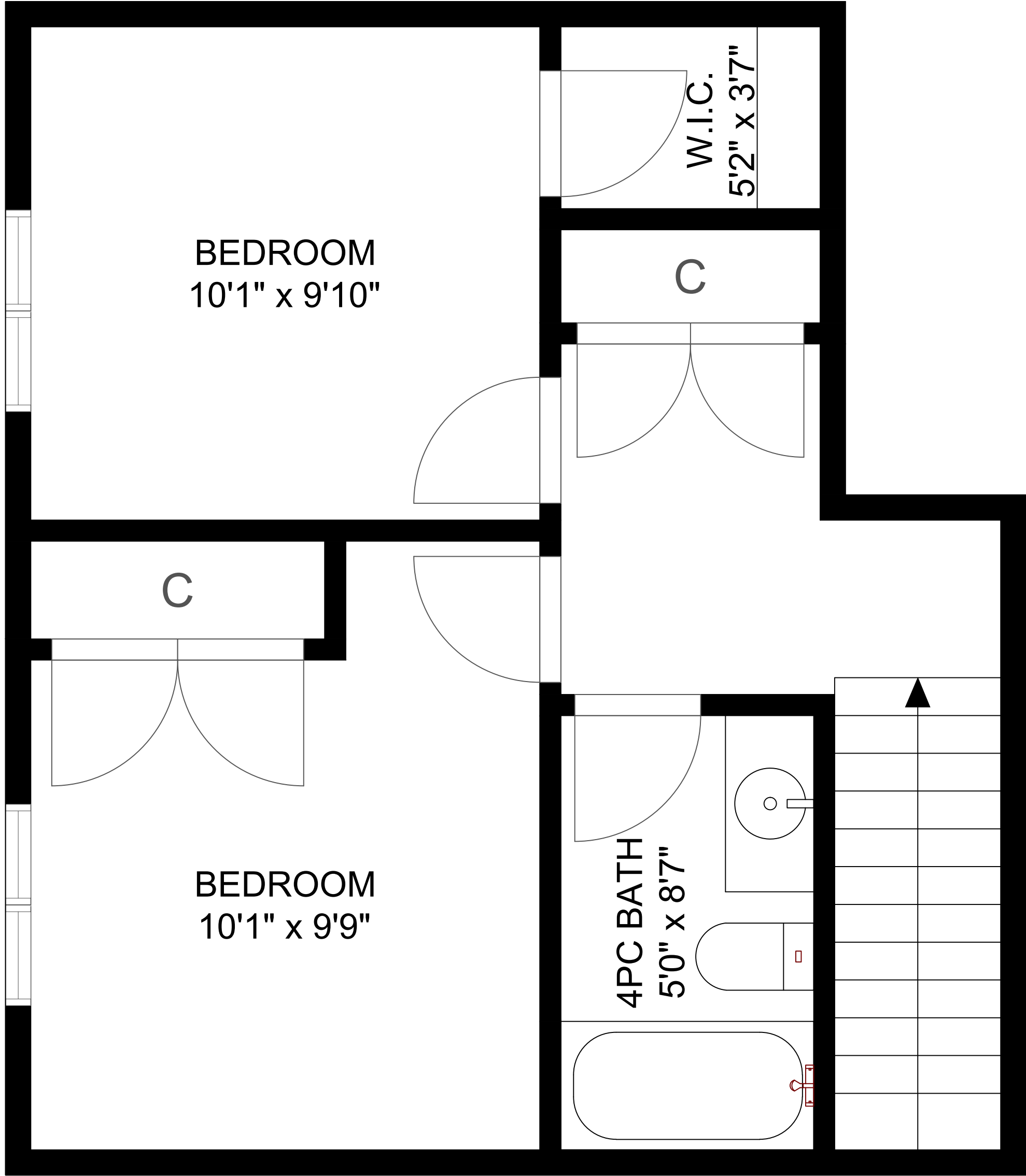


2715 Nanaimo River Road  
Nanaimo, BC

1628  
FINISHED SQFT



MAIN LEVEL - 1190 SQFT  
CEILING HEIGHT - 9'0"



UPPER LEVEL - 438 SQFT  
CEILING HEIGHT - 8'0"



All floor plan measurements, square footage, and drawings are approximate and provided for illustrative purposes only, and should be independently verified by the Buyer if important.