

128 Craig Street

Nanaimo, BC

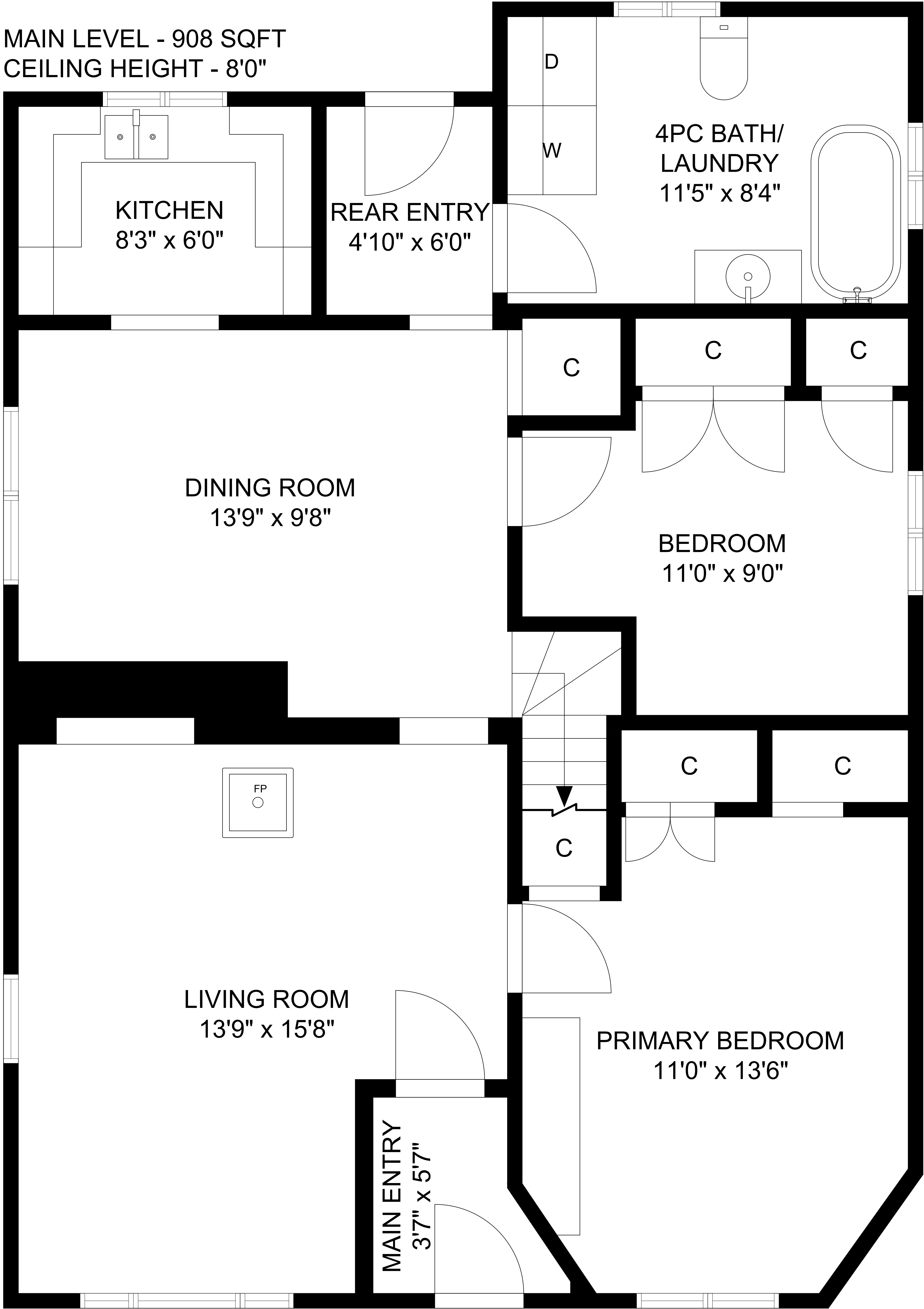
1148

FINISHED SQFT

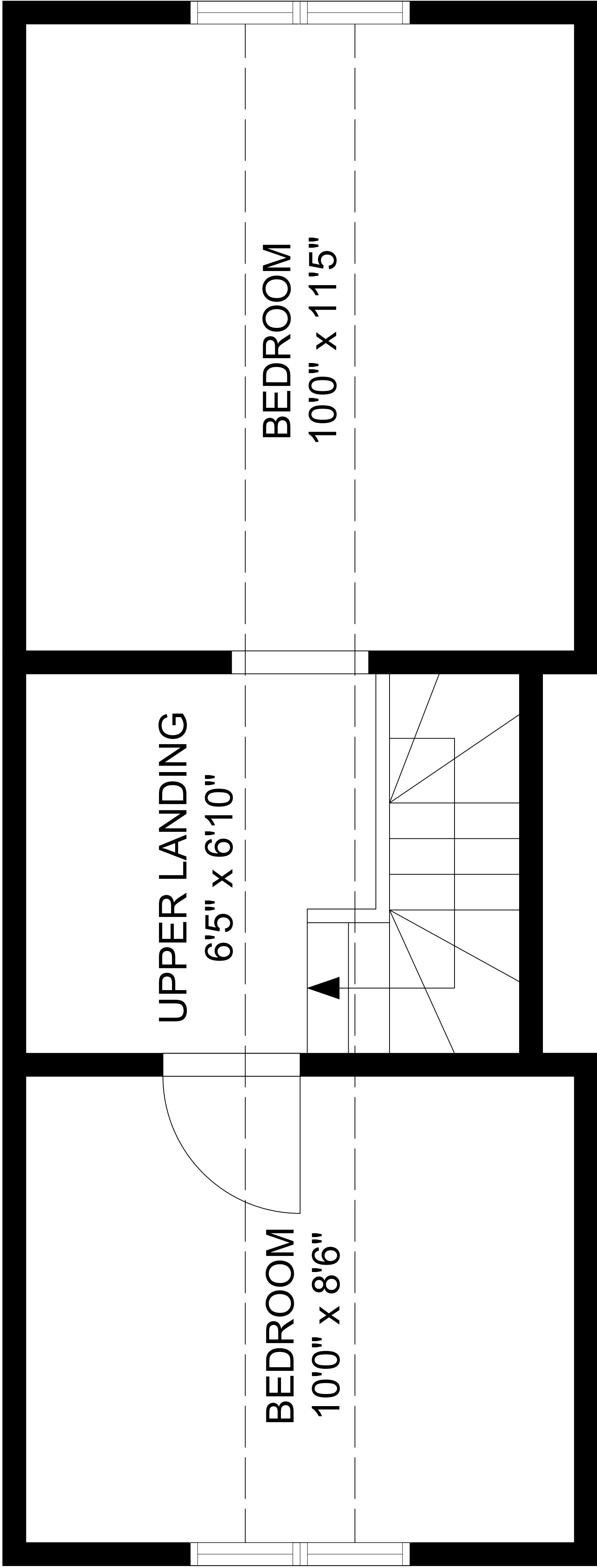
8'0"

CEILING HEIGHT

MAIN LEVEL - 908 SQFT  
CEILING HEIGHT - 8'0"



UPPER LEVEL - 240 SQFT  
CEILING HEIGHT - 8'0"



All floor plan measurements, square footage, and drawings are approximate and provided for illustrative purposes only, and should be independently verified by the Buyer if important.