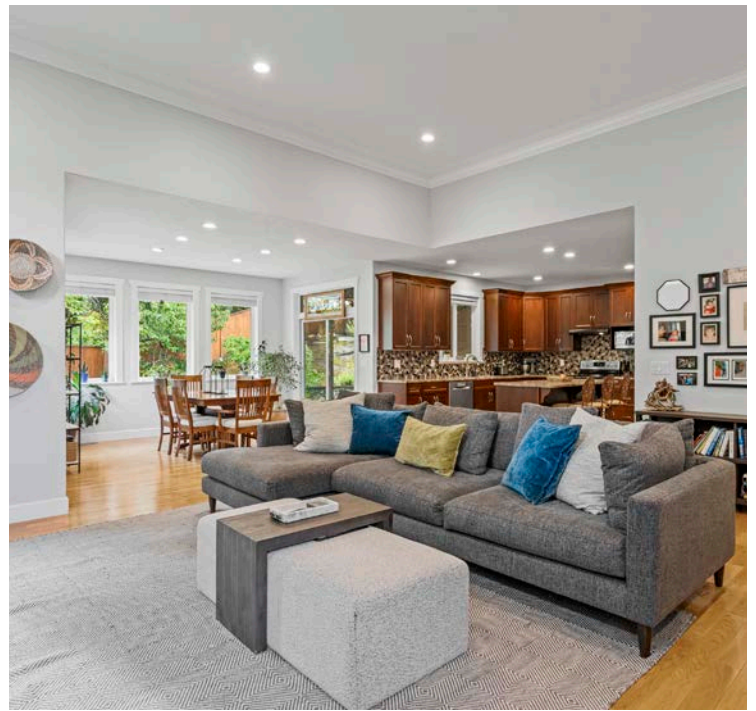




MILLER REAL ESTATE TEAM
512 Martina Way





This beautifully maintained home backs onto parkland and offers a spacious layout with excellent indoor and outdoor living. The main level features 12-foot ceilings in the living room with a floor-to-ceiling stone gas fireplace and hardwood floors. The open-concept kitchen includes four stainless appliances and an island with eating bar, and the adjacent family room with exterior access is ideal for a playroom or home-based business. Also on the main level are a den/bedroom, two-piece bathroom and laundry. Upstairs are three bedrooms, including a spacious primary with a walk-in closet and a four-piece ensuite featuring a soaker tub and separate shower. A second four-piece bathroom completes the upper level. The fully fenced backyard is a private sanctuary with a large patio, garden beds, shed, and sprinkler system. Updates include fresh paint, some new windows, newer blinds, newer carpet, and a new hot water tank.



Specifications



City: Nanaimo

Zoning: R5

Home Size: 2,804 SqFt

Lot Size: 8,038 SqFt

Taxes: \$6,261 (2024)

Construction: Frame

Roof: Fibreglass Shingle

Year Built

Bedrooms: 4

Bathrooms: 3

Heat: Heat Pump & Forced Air -
Natural Gas

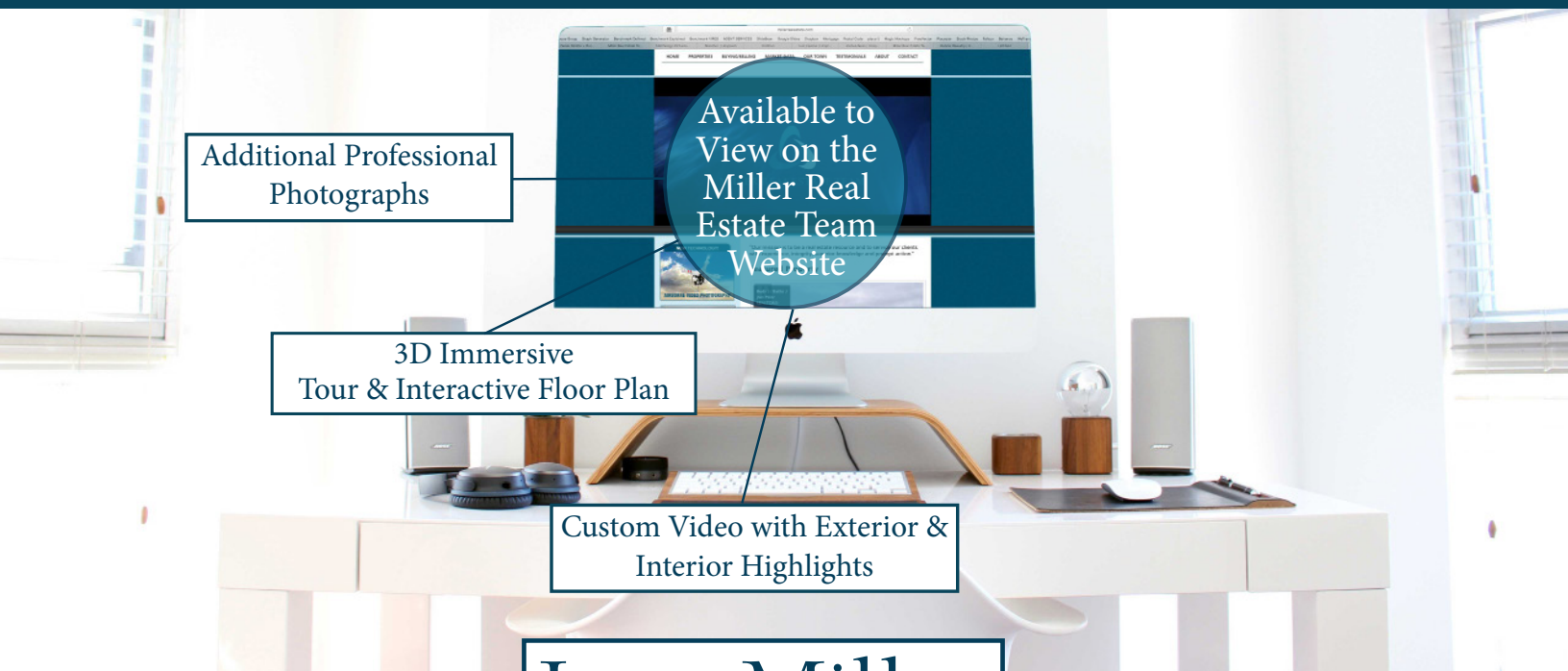
Schools: syuwénct Elementary &
Wellington Secondary

Diver Lake

All data & measurements are approximate
& should be verified if important.



Thank you for viewing 512 Martina Way
Additional Information Available at MillerRealEstate.com



Additional Professional
Photographs

Available to
View on the
Miller Real
Estate Team
Website

3D Immersive
Tour & Interactive Floor Plan

Custom Video with Exterior &
Interior Highlights



MILLER REAL ESTATE TEAM

Joan Miller
Personal Real Estate Corporation

REMAX
PROFESSIONALS
EACH OFFICE INDEPENDENTLY OWNED AND OPERATED

250.751.1223 • MillerRealEstate.com • 1-5140 Metral Dr