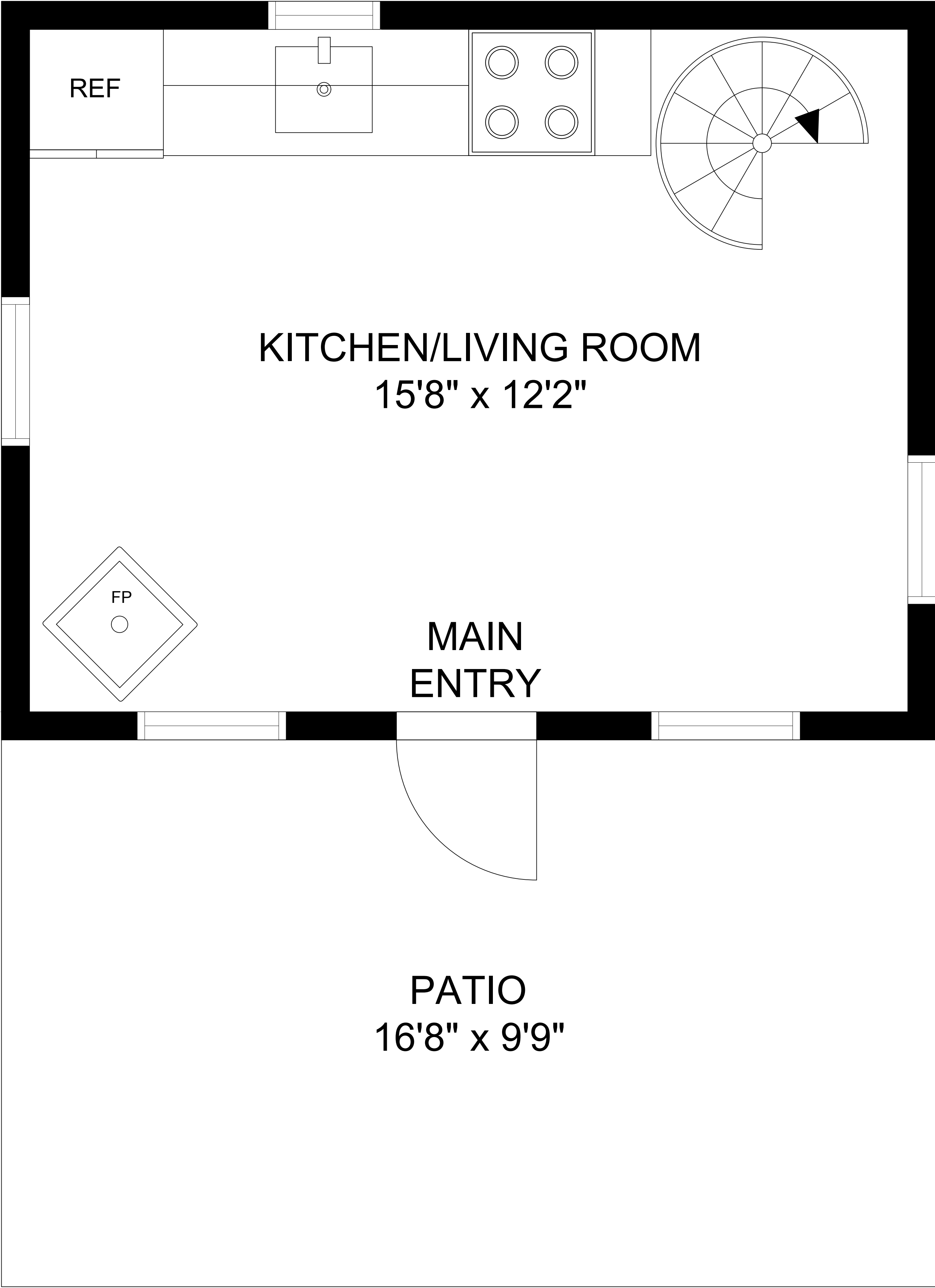
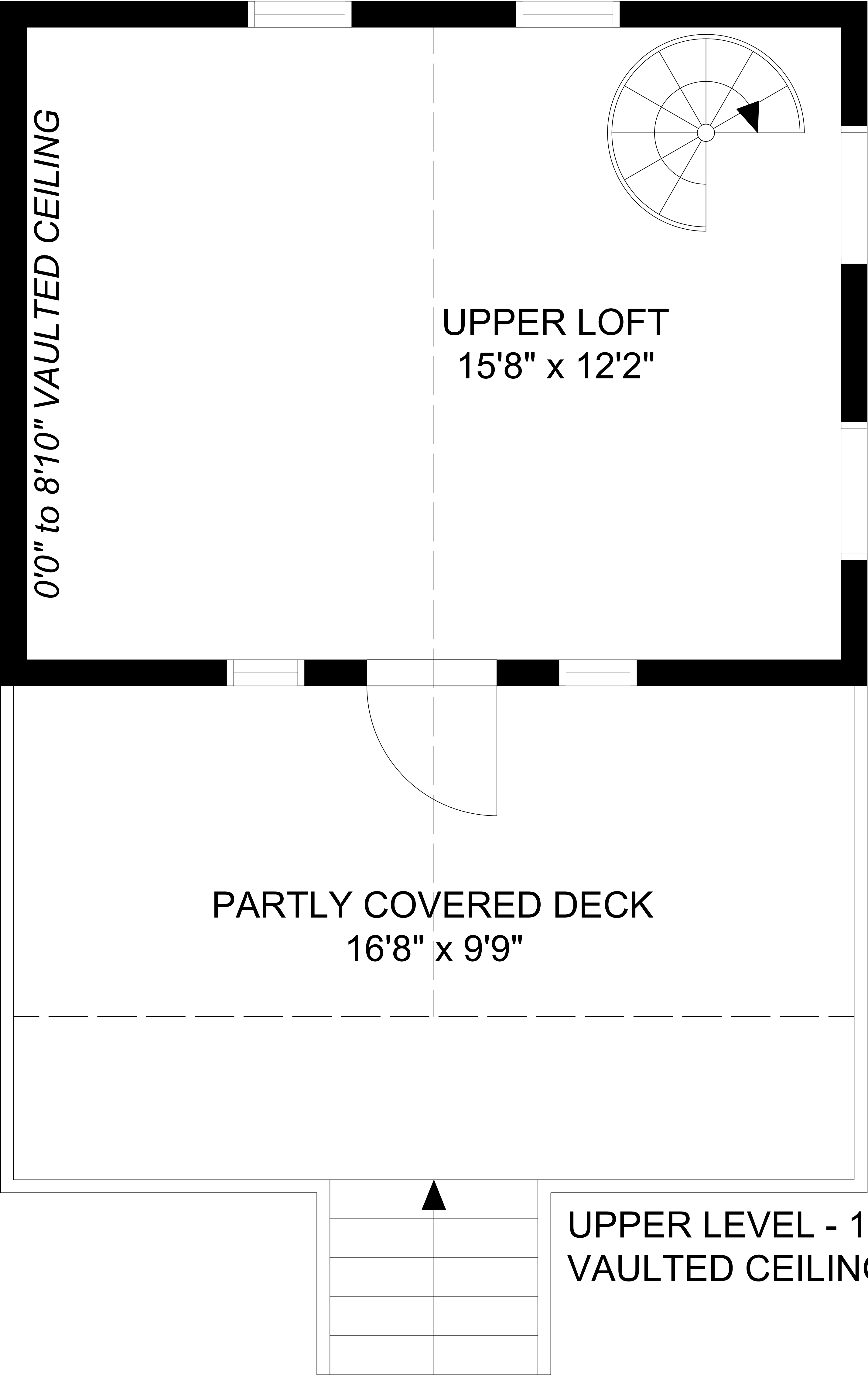


1082 Sixth Avenue  
Ucluelet, BC

406  
FINISHED SQFT



MAIN LEVEL - 220 SQFT  
CEILING HEIGHT - 7'6"



UPPER LEVEL - 186 SQFT  
VAULTED CEILING - 8'10"



All floor plan measurements, square footage, and drawings are approximate and provided for illustrative purposes only, and should be independently verified by the Buyer if important.