

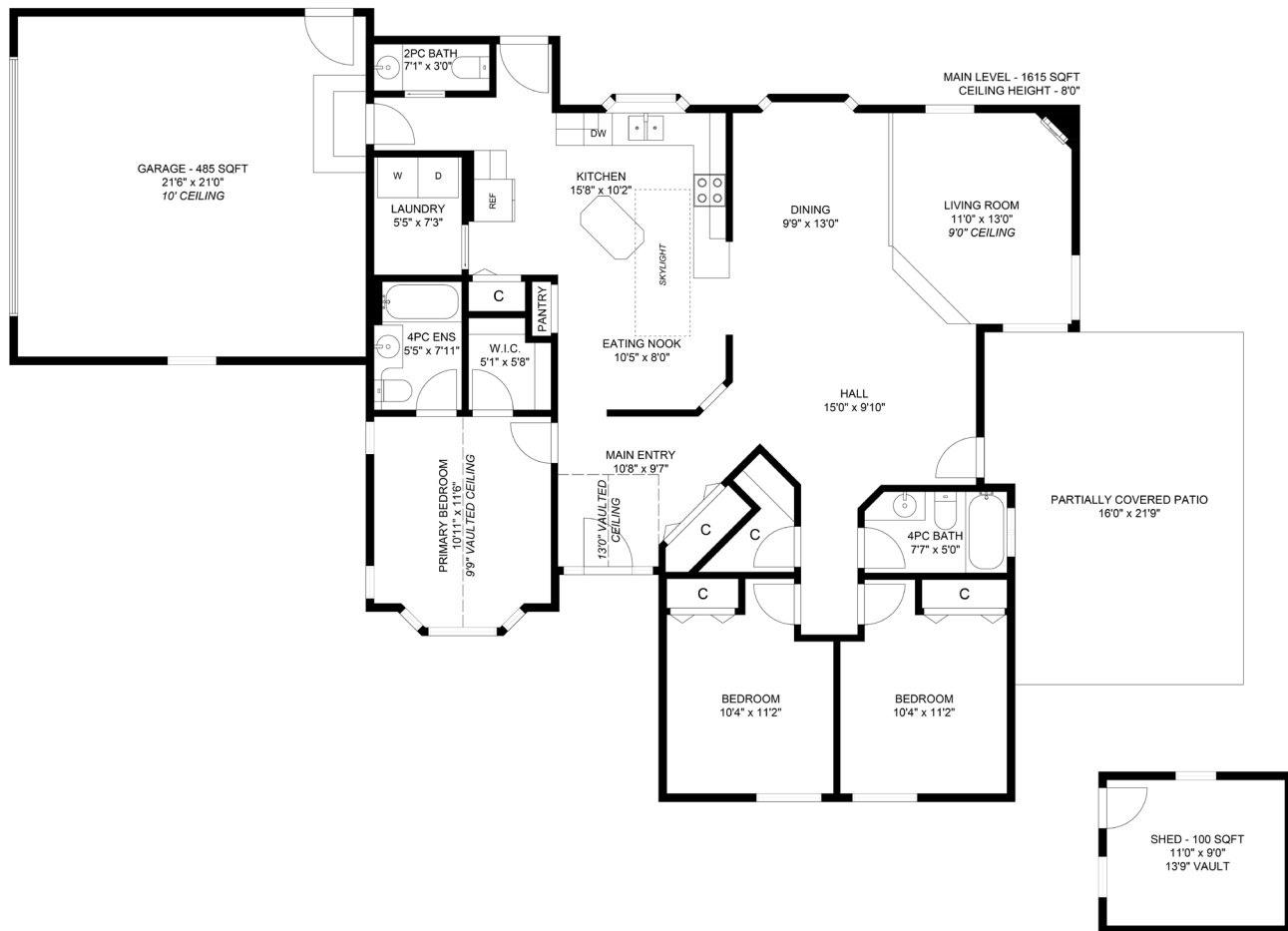


MILLER REAL ESTATE TEAM
381 Rheumer Crescent





This immaculate 1,615 sqft rancher offers comfortable, single-level living in a desirable Parksville neighbourhood close to shopping and amenities. The living room features a cozy gas fireplace, while the skylit kitchen is bright and functional with abundant white cabinetry, island, eating area, and four appliances. A separate dining room adds flexibility for family meals or entertaining. The home includes three bedrooms, including a spacious primary with a walk-in closet and a four-piece ensuite. There is also a four-piece main bathroom and two-piece powder room. Additional highlights include a laundry room, built-in vacuum, new carpet, retractable screen doors, metal roof and updated plumbing. Enjoy the outdoors from the covered patio in the fully fenced, private backyard. A detached 100 sqft storage shed, built in 2022, adds extra storage space. The home also features a double garage and abundant parking.



Floor Plan & Specifications



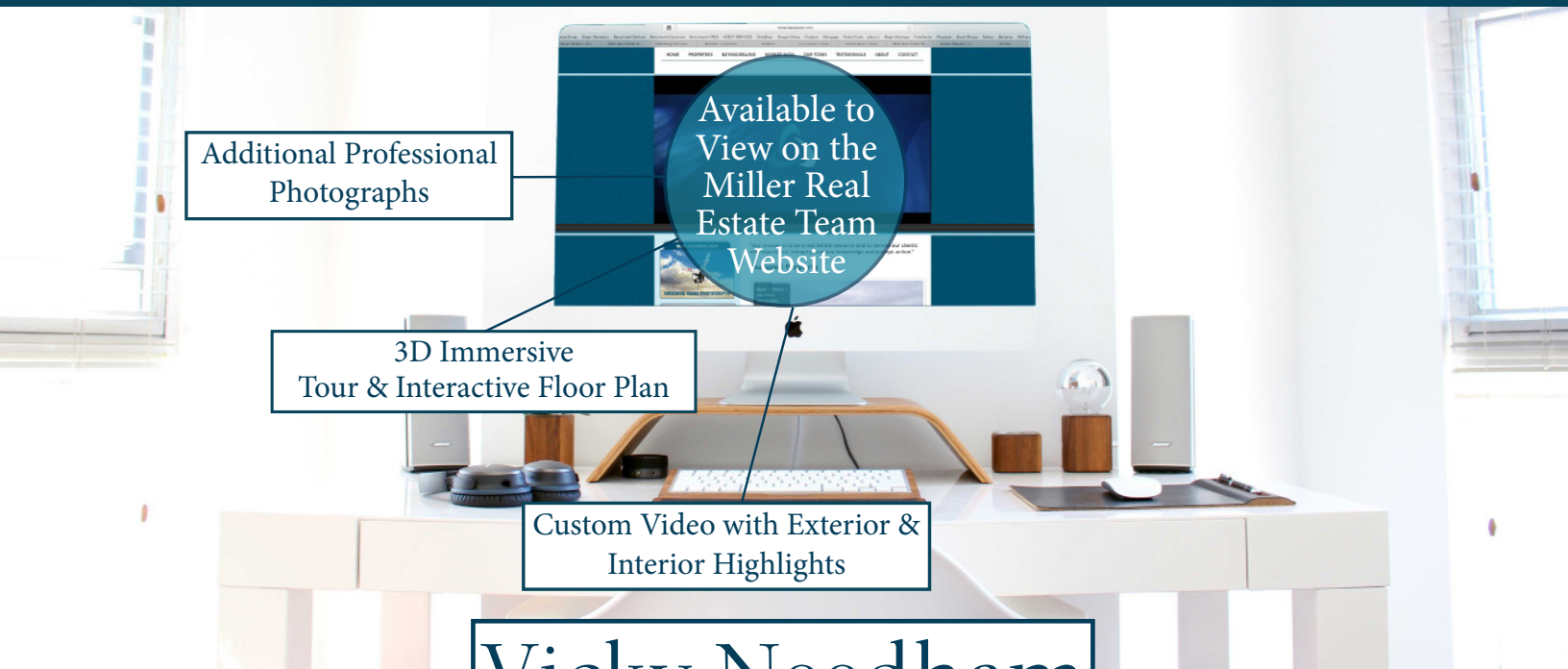
City: Parksville
 Home Size: 1,615 SqFt
 Lot Size: 0.22 Acres
 Year Built: 1996
 Taxes: \$4,819 (2024)
 Construction: Frame
 Exterior Finish: Vinyl
 Roof: Metal
 Bedrooms: 3
 Bathrooms: 3
 Heat: Heat Pump
 Schools: Oceanside Elementary &
 Ballenas Secondary

Parksville

All data & measurements are approximate
 & should be verified if important.



Thank you for viewing 381 Rheumer Crescent
Additional Information Available at MillerRealEstate.com



MILLER REAL ESTATE TEAM

Vicky Needham
Personal Real Estate Corporation

RE/MAX
OF NANAIMO
Each Office Independently Owned and Operated

250.751.1223 • MillerRealEstate.com • 1-5140 Metral Dr