

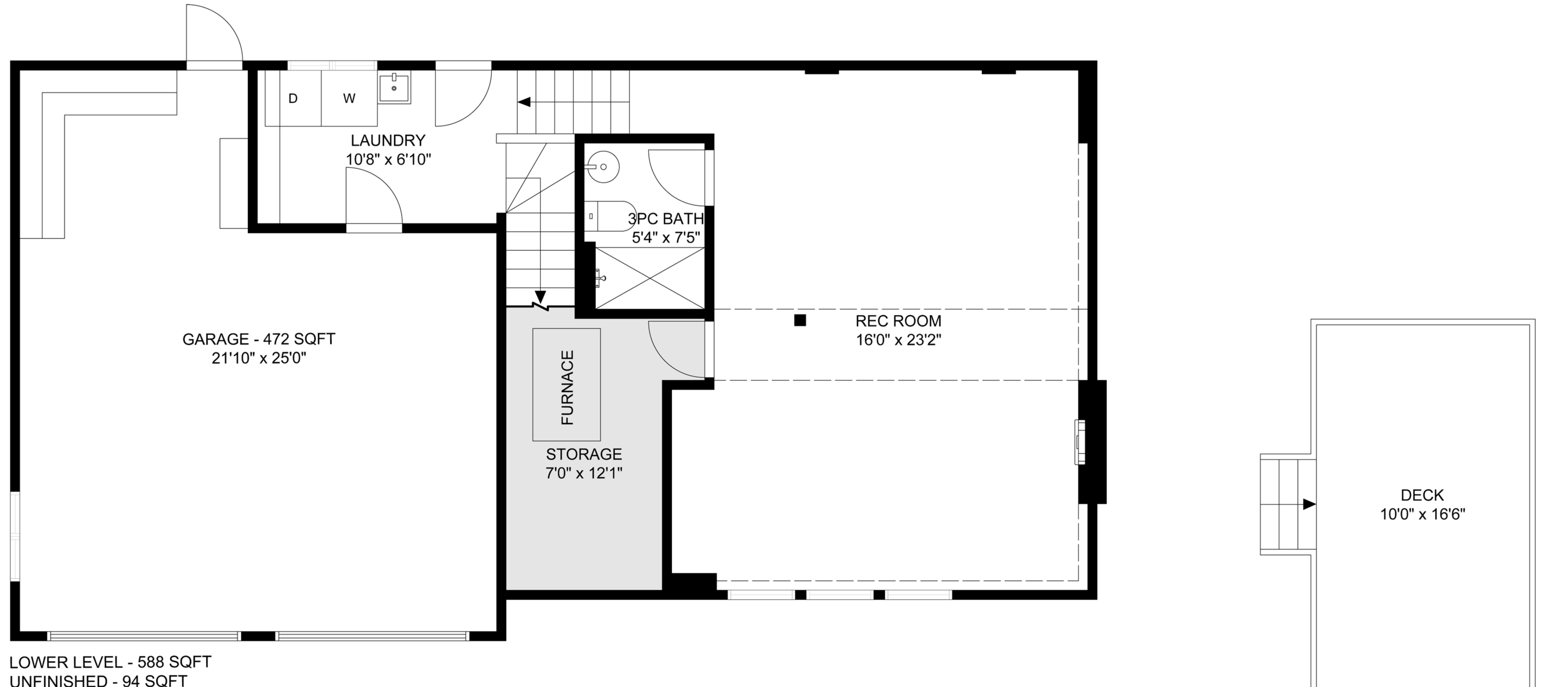
2105 Manchester Lane

Nanaimo, BC

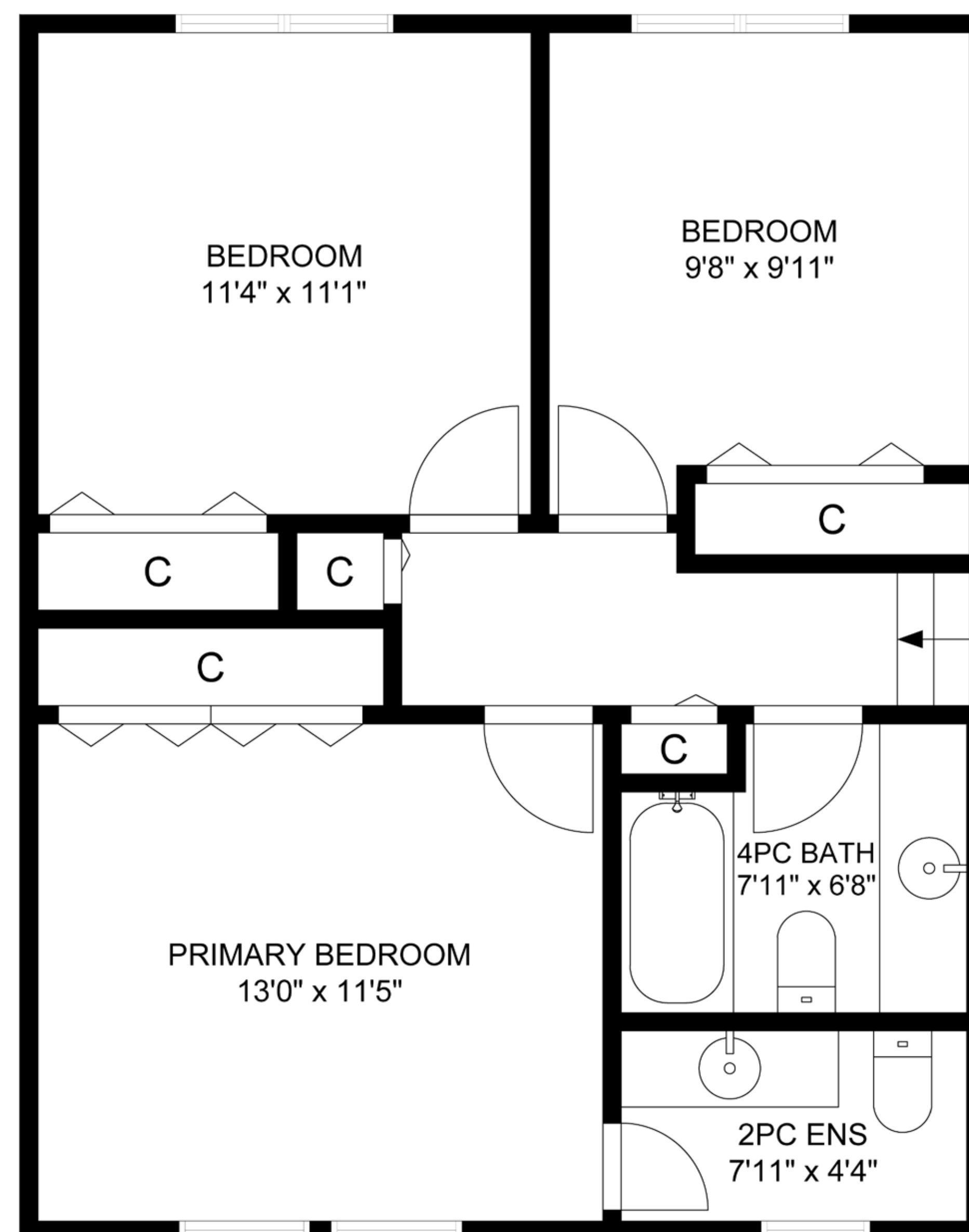
1856
FINISHED SQFT

94
UNFINISHED SQFT

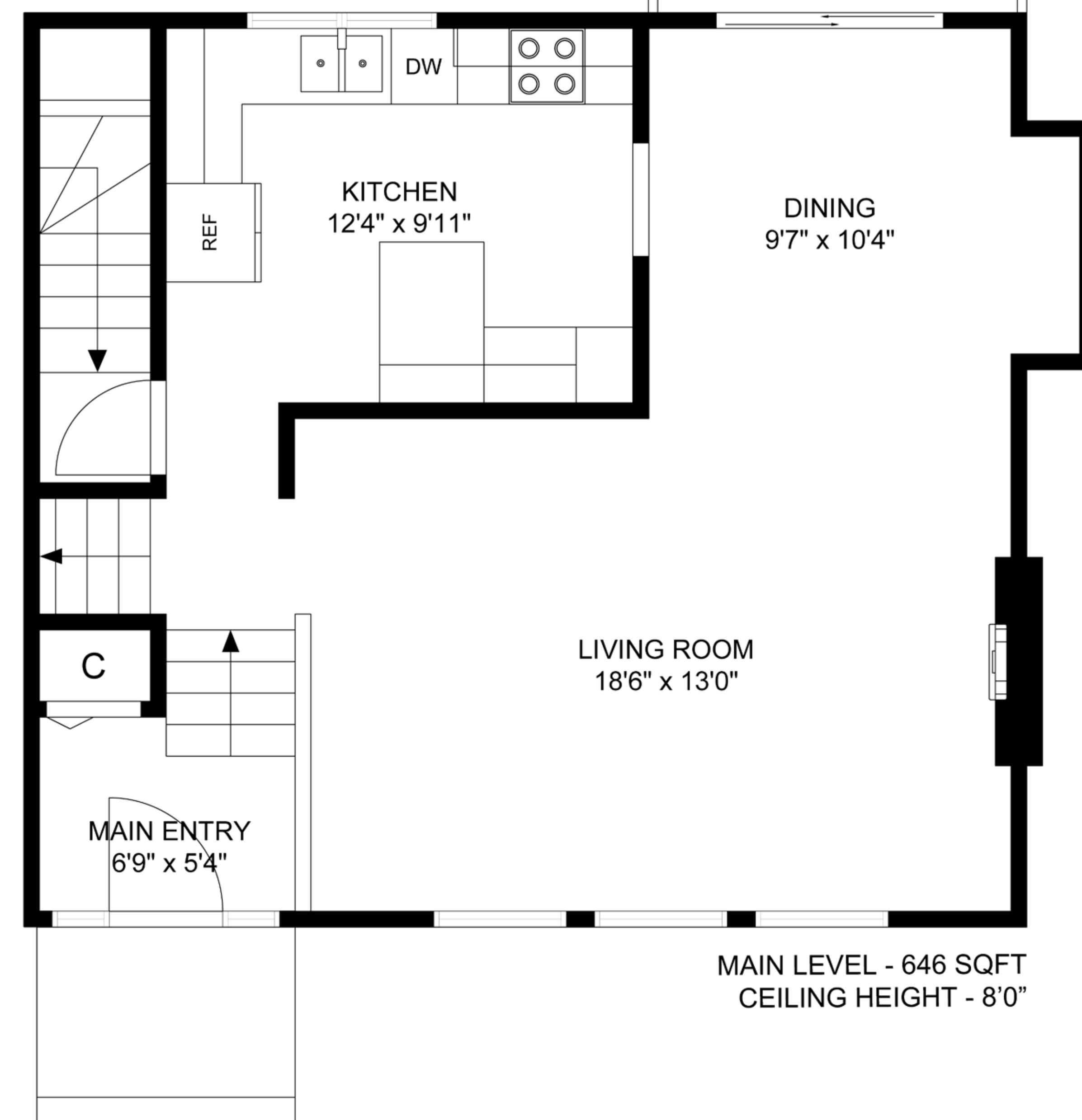
472
GARAGE SQFT



LOWER LEVEL - 588 SQFT
UNFINISHED - 94 SQFT
CEILING HEIGHT - 7'7"



UPPER LEVEL - 622 SQFT
CEILING HEIGHT - 8'0"



MAIN LEVEL - 646 SQFT
CEILING HEIGHT - 8'0"

