

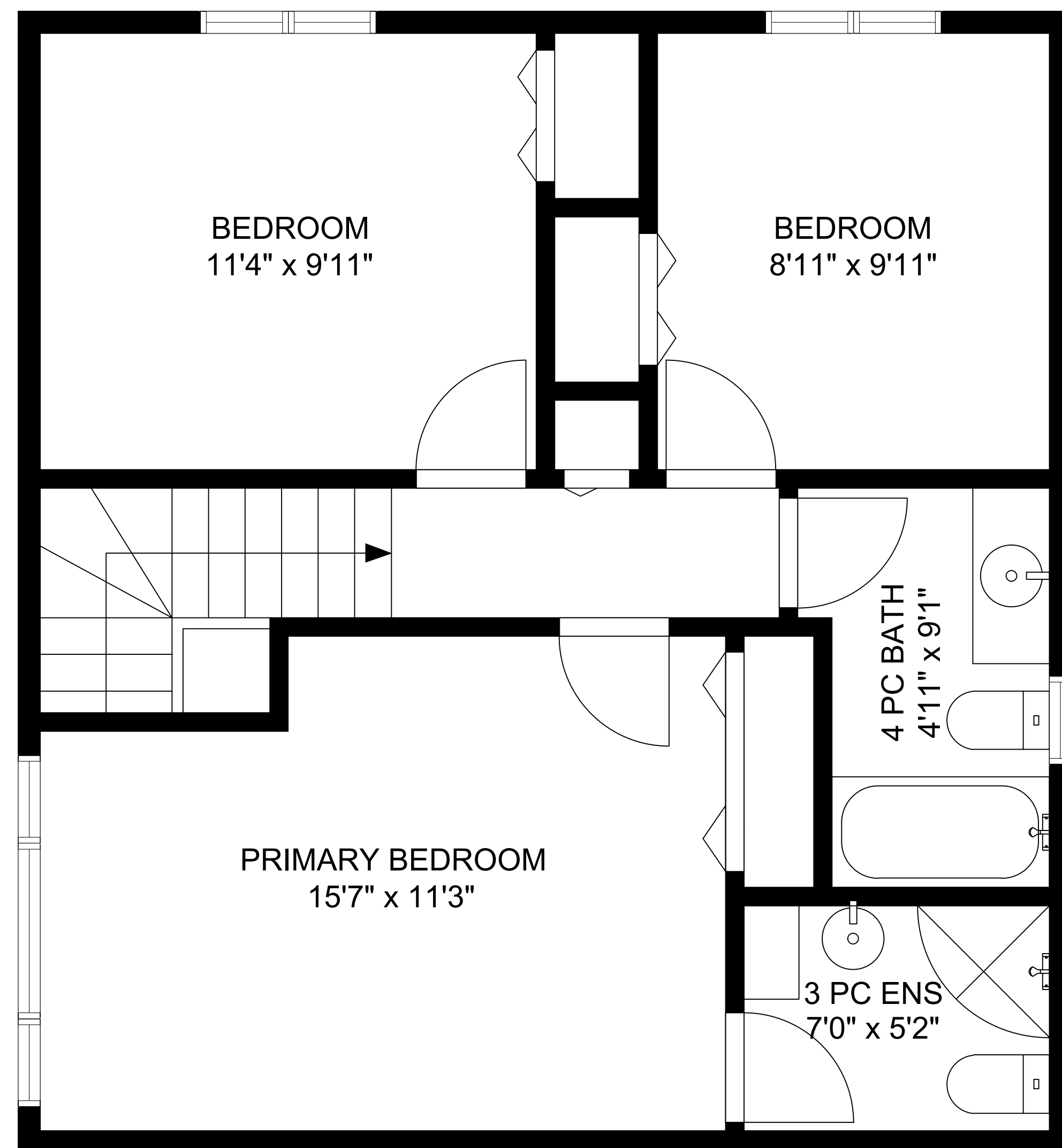
5771 Broadway Road
Nanaimo, BC

1900
FINISHED SQFT

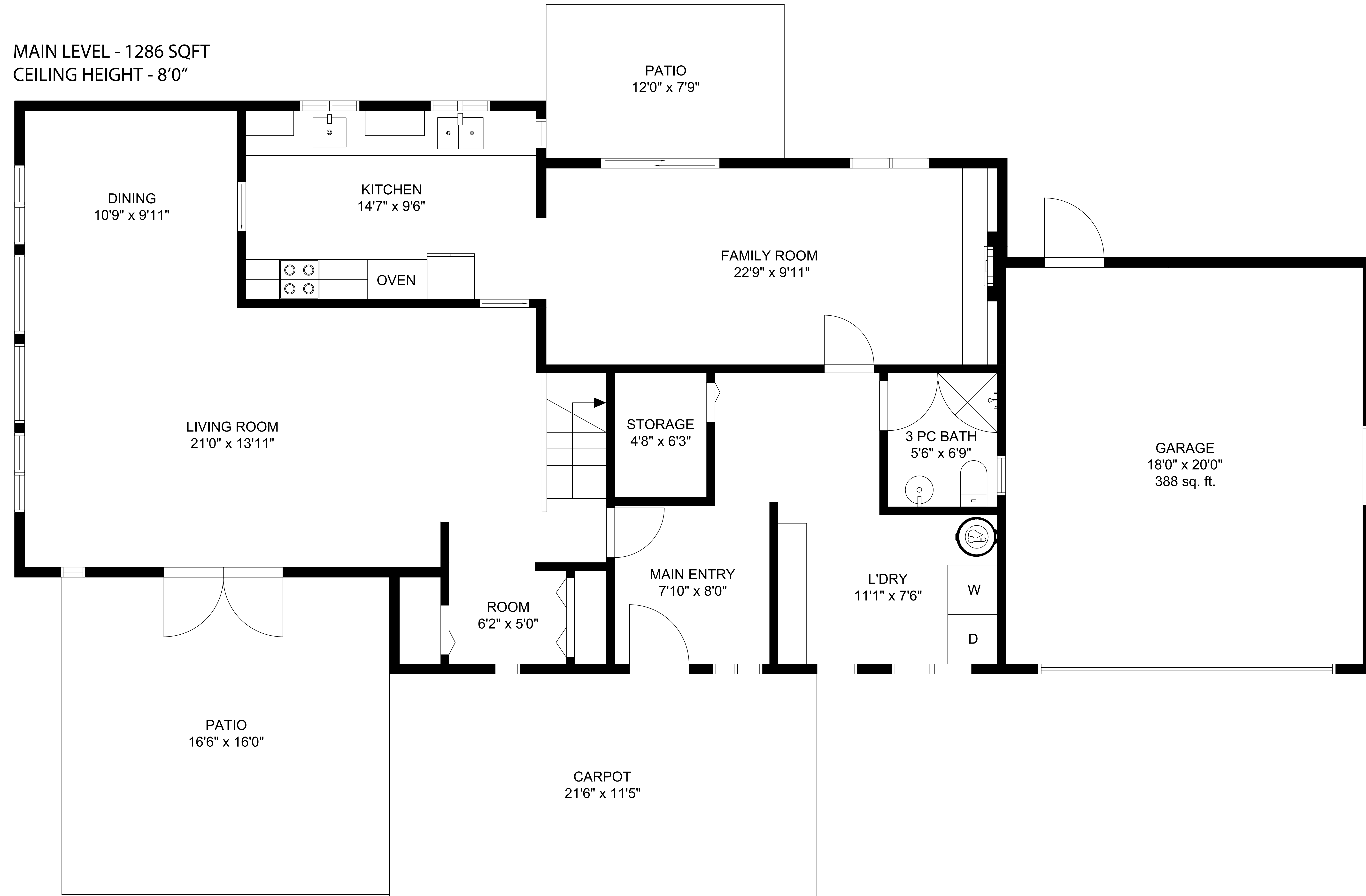
388
GARAGE SQFT

8'0"
CEILING HEIGHT

UPPER LEVEL - 614 SQFT
CEILING HEIGHT - 8'0"



MAIN LEVEL - 1286 SQFT
CEILING HEIGHT - 8'0"



All floor plan measurements, square footage, and drawings are approximate and provided for illustrative purposes only, and should be independently verified by the Buyer if important.