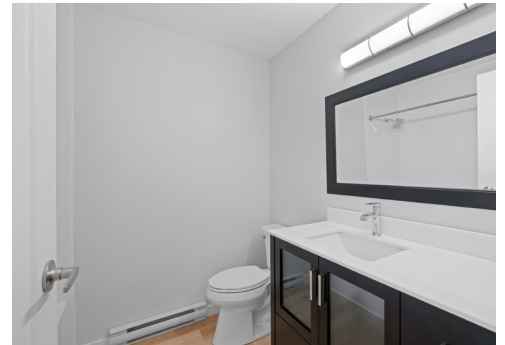


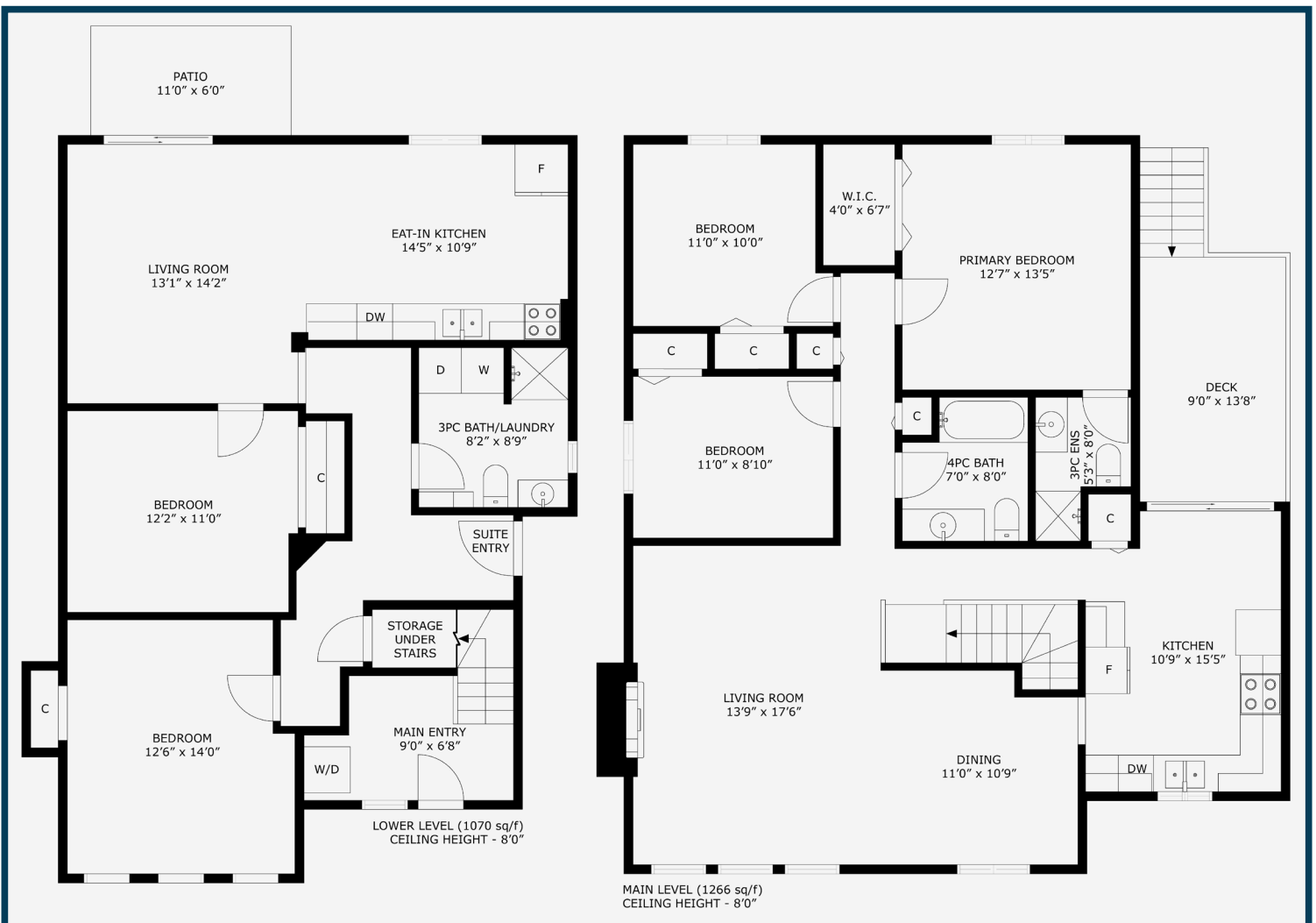


MILLER REAL ESTATE TEAM
112 Sussex Place





Nestled on a cul-de-sac in the sought-after Diver Lake neighborhood, this updated home offers versatility with a renovated three-bedroom main-level and a legal two-bedroom suite downstairs. The main level has been completely transformed, featuring a brand-new kitchen, flooring, doors, trim, and more. A spacious living room and adjoining dining area provide an inviting space for relaxation and entertaining. The primary bedroom boasts a walk-in closet and three-piece ensuite, while a four-piece bathroom, full-size laundry, and a deck with direct yard access complete the layout. The lower-level suite includes a bright eat-in kitchen, two well-sized bedrooms, a three-piece bathroom, and in-suite laundry. Outside, the yard offers multiple patios, a grassy area, and a storage shed, perfect for outdoor enjoyment. A carport and extended driveway provide ample parking.



Specifications & Floor Plan



Diver Lake

Zoning: R5

Home Size: 2,336 SqFt

Lot Size: 7,068 SqFt

Taxes: \$4,799 (2024)

Construction: Frame

Exterior Finish: Wood

Roof: Fibreglass Shingle

Bedrooms: 5

Bathrooms: 3

Heat: Electric Baseboard

Schools: Syuwénct Elementary & Wellington Secondary

All data & measurements are approximate & should be verified if important.



Thank you for viewing 112 Sussex Place
Additional Information Available at MillerRealEstate.com



Additional Professional
Photographs

Available to
View on the
Miller Real
Estate Team
Website

3D Immersive
Tour & Interactive Floor Plan

Custom Video with Exterior
& Interior Highlights

Andrew Miller

Personal Real Estate Corporation

Jim Miller

Personal Real Estate Corporation



MILLER REAL ESTATE TEAM

RE/MAX
OF NANAIMO

Each Office Independently Owned and Operated

250.751.1223

• MillerRealEstate.com

• 1-5140 Metral Dr