



MILLER REAL ESTATE TEAM
52 Honey Drive





Welcome to this two bedroom home with many updates located in a park designed for those 55+. A fantastic location near downtown and South Nanaimo amenities. The unit offers an adjoining living and dining room with pass through from the kitchen with three appliances. A four piece bathroom and spacious laundry room with newer washer and dryer complete the unit. Additional features include a ductless heat pump, newer electric furnace and detached storage shed. The outdoor area includes a covered deck. Two small pets up to 15 lbs are allowed with park approval.

52 Honey Drive

Total Finished Area - 830 Sq Ft

Property Matrix

830 Sq Ft

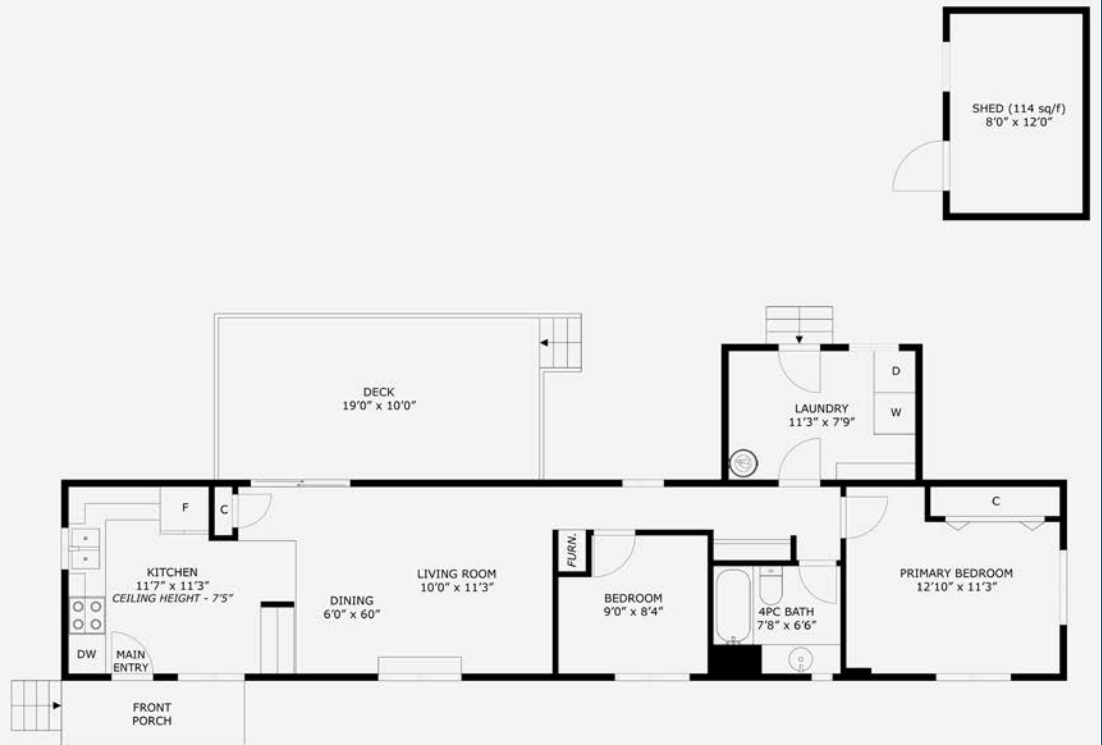
Total Finished

114 Sq Ft

Shed

8'0"

Ceiling Height



Floor Plan & Specifications



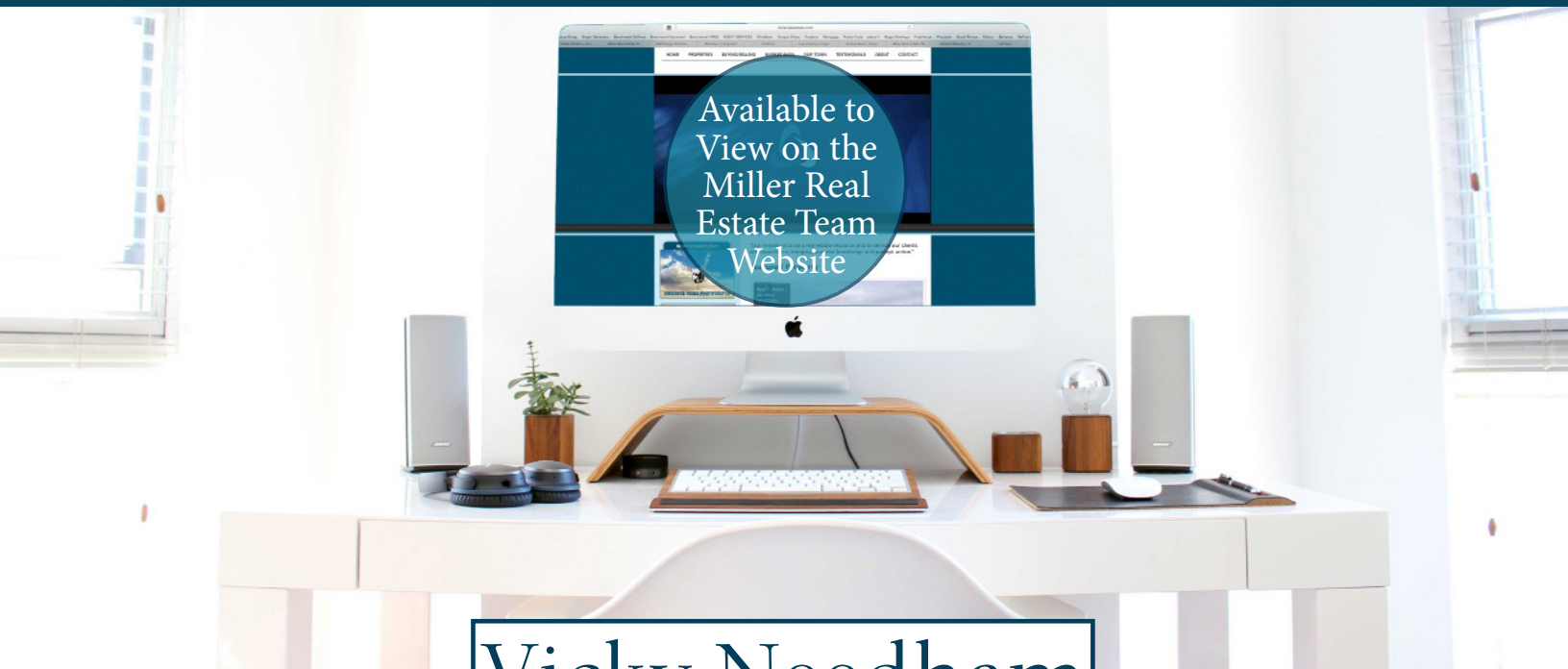
City: Nanaimo
Zoning: R12
Home Size: 830 sq ft
Year Built: 1972
Taxes: \$951 (2023)
Monthly Pad Fee: \$620
Exterior Finish: Metal
Bedrooms: 2
Bathrooms: 1

South Nanaimo

All data & measurements are approximate
& should be verified if important.



Thank you for viewing 52 Honey Drive
Additional Information Available at MillerRealEstate.com



Vicky Needham
Personal Real Estate Corporation



MILLER REAL ESTATE TEAM

RE/MAX
OF NANAIMO
Each Office Independently Owned and Operated

250.751.1223 • MillerRealEstate.com • 1-5140 Metral Dr