

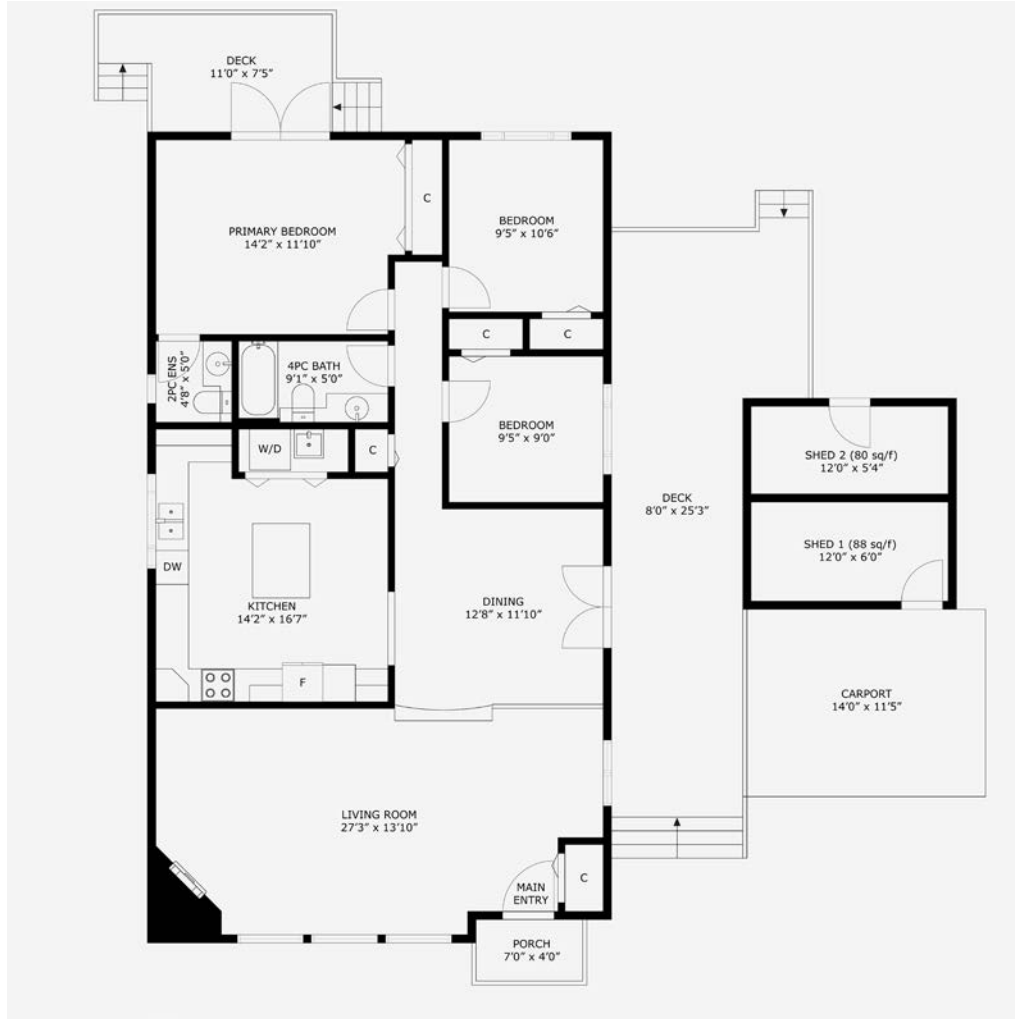


MILLER REAL ESTATE TEAM
3732 Howden Drive





Welcome to this three bedroom rancher set on a private lot in the desirable Uplands area. The spacious sunken living room features large front windows and corner fireplace with tile surround. The updated kitchen boasts abundant cabinetry, three appliances, and island with eating bar. A private side deck and patio is accessed from the dining room. The primary bedroom has a two piece ensuite and access to a separate back deck. Completing the home are two additional bedrooms, four piece main bathroom and full sized laundry. The lovely yard is incredibly private and serene with natural greenery and garden areas. A detached carport has two storage sheds and the wide driveway provides plenty of parking.



Specifications & Floor Plan



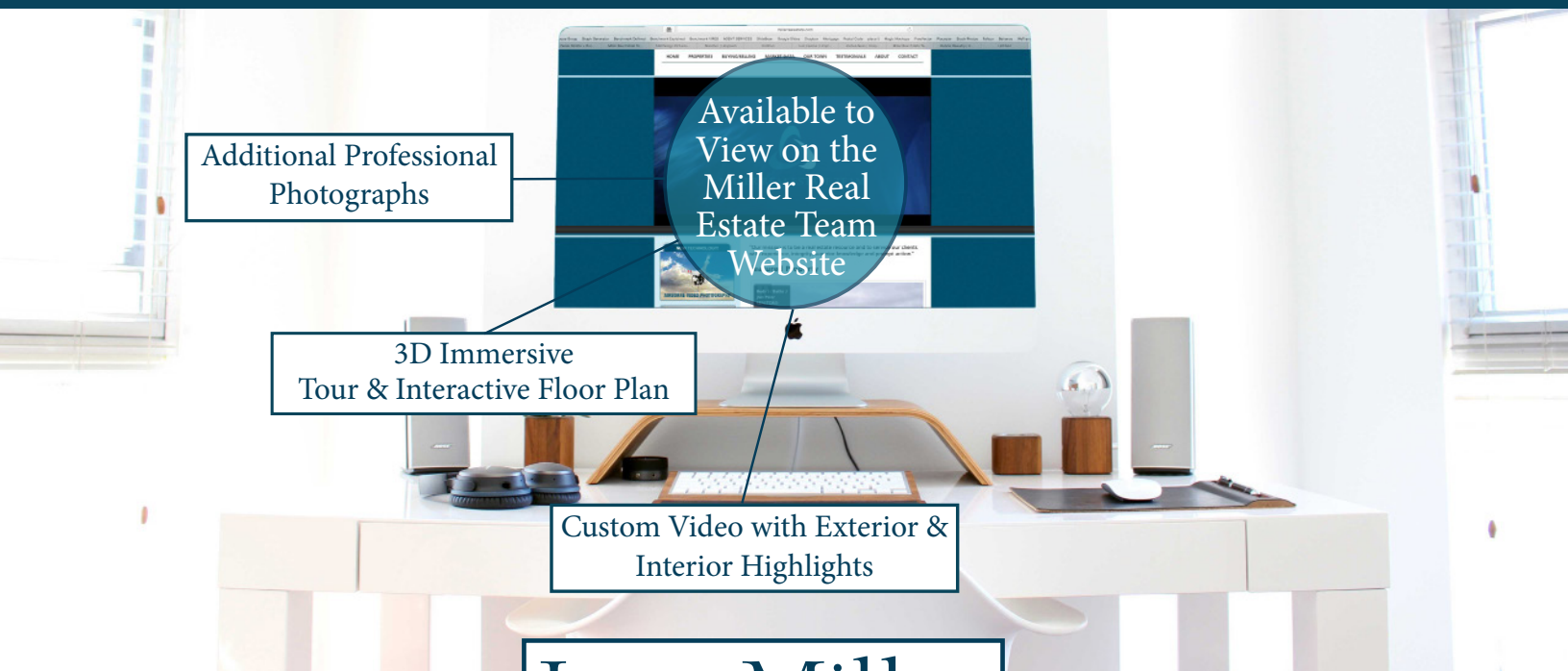
City: Nanaimo
 Zoning: R1
 Home Size: 1,386 sqft
 Lot Size: 7.804 sqft
 Taxes: \$4,301 (2023)
 Layout: Rancher
 Exterior Finish: Wood
 Roof: Fibreglass Shingle
 Bedrooms: 3
 Bathrooms: 2
 Heat: Electric Baseboard
 Schools: Uplands Park Elementary
 & Wellington Secondary

Oliver Woods Community Centre

All data & measurements are approximate & should be verified if important.



Thank you for viewing 3732 Howden Drive
Additional Information Available at MillerRealEstate.com



Additional Professional
Photographs

Available to
View on the
Miller Real
Estate Team
Website

3D Immersive
Tour & Interactive Floor Plan

Custom Video with Exterior &
Interior Highlights



MILLER REAL ESTATE TEAM

Joan Miller
Personal Real Estate Corporation

RE/MAX
OF NANAIMO
Each Office Independently Owned and Operated

250.751.1223 • MillerRealEstate.com • 1-5140 Metral Dr