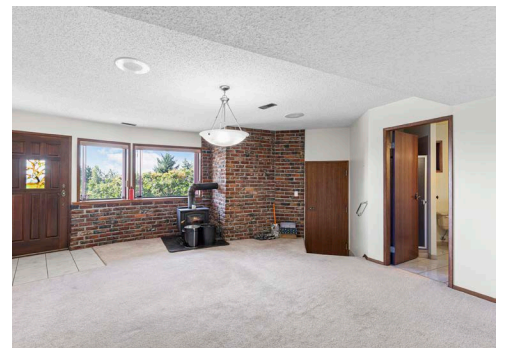
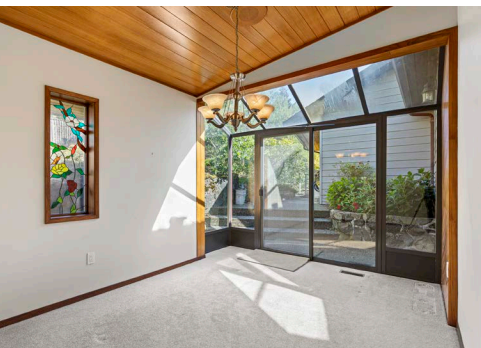




MILLER REAL ESTATE TEAM
1398 Rose Ann Drive





Set on a 24,003 sqft lot, this fantastic Departure Bay home is ready for your renovation ideas. Enjoy the stunning views of Departure Bay and Sugarloaf Mountain from two spacious decks. The kitchen offers four stainless appliances, built in oven, centre island, and plenty of cabinetry. The primary bedroom boasts a walk-in closet, four-piece ensuite with a jetted tub, and deck access. Completing the main floor is a formal dining room, two additional bedrooms,

and 3-piece bathroom. The lower level has additional living space, two bedrooms, and 3-piece bathroom. The yard has a greenhouse, storage shed, and plenty of trees to maintain privacy. A double garage and large driveway accommodate ample parking. Additional features include vaulted ceilings, stained glass windows, and plenty of storage room. This is a fantastic location near beaches, parks, and amenities.



Specifications



City: Nanaimo

Zoning: R1

Home Size: 3,362 sqft

Taxes: \$7,421 (2022)

Construction: Frame

Exterior Finish: Wood

Roof: Fibreglass Shingle

Lot Size: 24,003 sqft

Bedrooms: 5

Bathrooms: 3

Heat: Heat Pump

Schools: Departure Bay Elementary
& Wellington Secondary

Departure Bay

All data & measurements are approximate
& should be verified if important.



Thank you for viewing 1398 Rose Ann Drive
Additional Information Available at MillerRealEstate.com

Additional Professional
Photographs

Available to
View on the
Miller Real
Estate Team
Website

3D Immersive
Tour & Interactive Floor Plan

Custom Video with Exterior
& Interior Highlights

Andrew Miller

PersonalRealEstateCorporation

Jim Miller

PersonalRealEstateCorporation



MILLER REAL ESTATE TEAM

RE/MAX
OF NANAIMO

Each Office Independently Owned and Operated

250.751.1223

• MillerRealEstate.com

• 1-5140 Metral Dr