



MILLER REAL ESTATE TEAM
303-520 Blue Girl Way





Welcome to Newport – one of Nanaimo’s most desirable waterfront complexes. This third floor unit is situated to enjoy uninterrupted views of the marina, yacht club and Newcatle Channel from throughout. The living room boasts floor to ceiling windows and a gas fireplace. The kitchen features four stainless appliances, eating bar and abundant cabinetry. Enjoy the morning sunshine on the partially covered deck overlooking the water with three

access points including French doors from the kitchen. The spacious primary bedroom offers a three piece ensuite and large closet. A four piece bathroom and den complete the home. Additional features include in-unit laundry, two parking stalls and storage locker. One dog or cat up to 25 lbs is allowed. Departure Bay Ferry Terminal, Maffeo Sutton Park, and a variety of downtown amenities are a short walk away.



MILLER REAL ESTATE TEAM

Property Matrix

1080 Sq Ft
Strata Area

8'2"
Ceiling Height

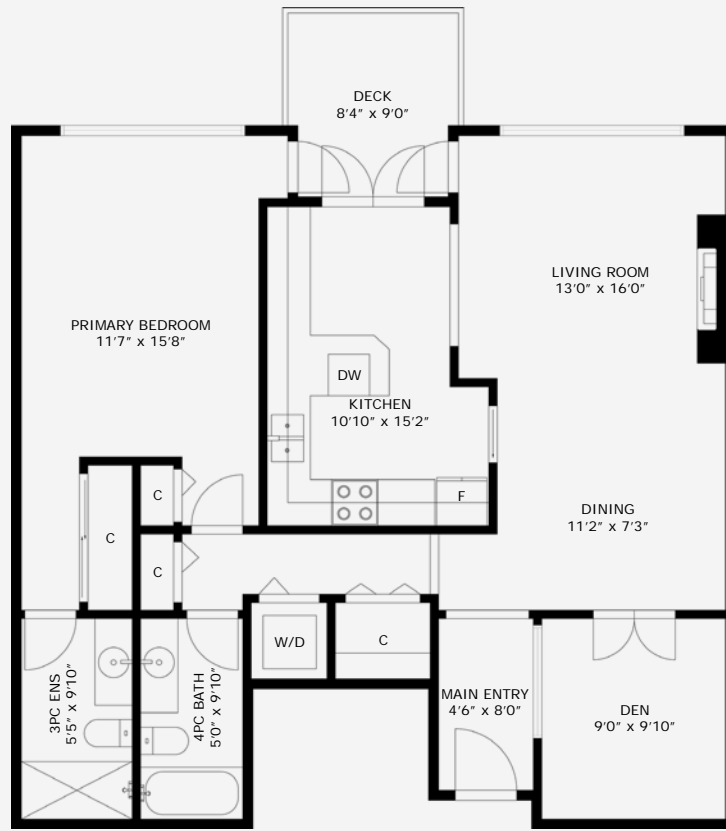


**FLAVR
SHOP**

All measurements are approximate and should be verified by the Buyer if important.

#303-520 Blue Girl Way

Strata Area - 1080 Sq Ft



Specifications



City: Nanaimo

Zoning: COR2

Home Size: 1,080 sqft

Taxes: \$3,215 (2022)

Exterior Finish: Cement Fibre

Roof: Metal

Year Built: 1993

Bedrooms: 1 + Den

Bathrooms: 2

Heat: Electric Baseboard

Brechin Hill

All data & measurements are approximate & should be verified if important.



Thank you for viewing 303-520 Blue Girl Way
Additional Information Available at MillerRealEstate.com

Additional Professional
Photographs

Available to
View on the
Miller Real
Estate Team
Website

3D Immersive
Tour & Interactive Floor Plan

Custom Video with Exterior
& Interior Highlights



MILLER REAL ESTATE TEAM

Joan Miller
Personal Real Estate Corporation
Jim Miller
Personal Real Estate Corporation

RE/MAX
OF NANAIMO
Each Office Independently Owned and Operated

250.751.1223 • MillerRealEstate.com • 1-5140 Metral Dr